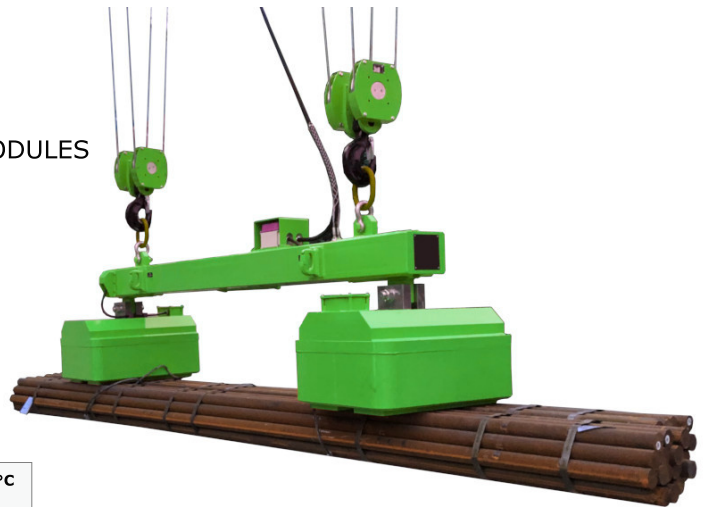


HEAVY LIFTING - SERIES VT-EL2-030

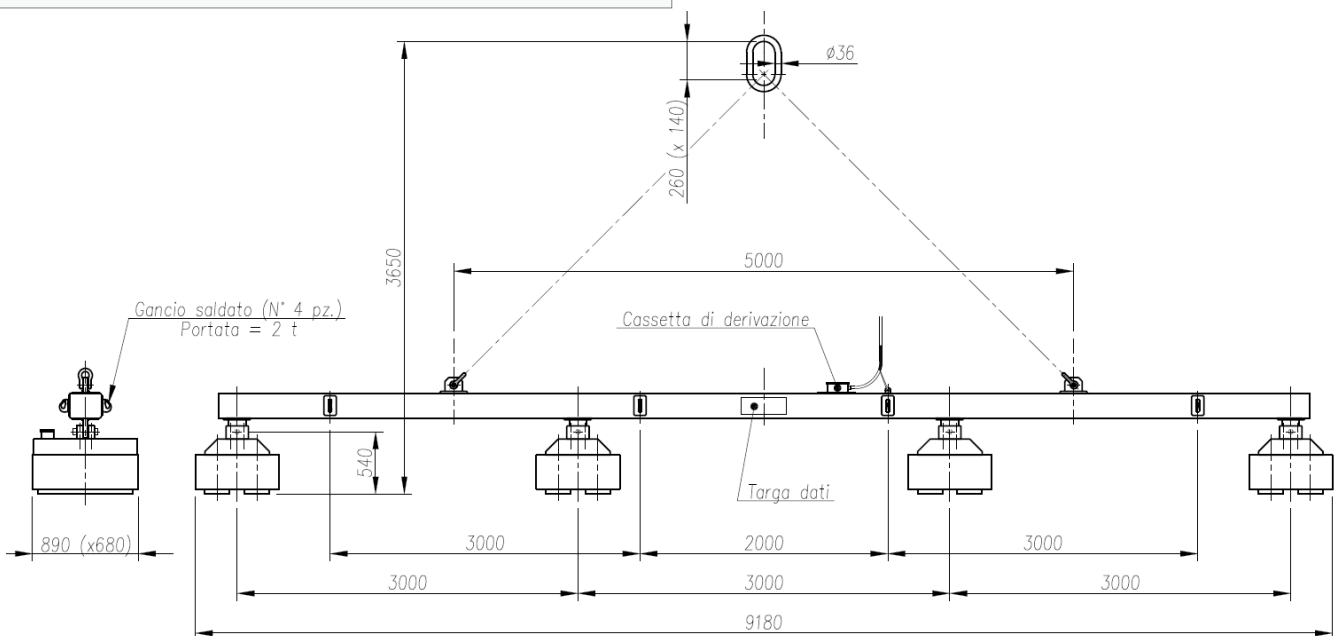
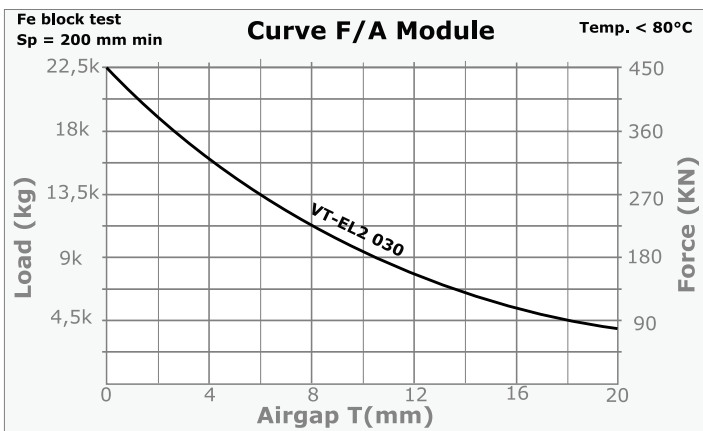
To handle billets and round bars

- ✓ ELECTROMAGNETIC SYSTEM WITH 2 OR 4 MODULES
- ✓ HIGH DEPTH OF FIELD
- ✓ SAFETY FACTOR 1: 2
- ✓ CHECK OF THE STATE OF CHARGE
- ✓ INTENSITY REGULATOR



Quickly intuitive commands allow easy use of the system.

The system is equipped with a series of devices, designed to ensure maximum safety during the lifting phase.



System VT-EL2-030

MODEL	Nr Modules	Weight (kg)	DIMENSIONS (mm)				Load DIMENSIONS (mm)		Load (kg)	
			L1	L2	H	H1	Diam Bundle	Lenght max	Round/Sqaure	Rods
VT-EL2 030-2	2	3600	3680	890	2280	540	da 250 a 350	6.000	6.000	4.000
VT-EL2 030-4	4	8000	9180	890	3650	540	da 250 a 350	12.000	12.000	8.000