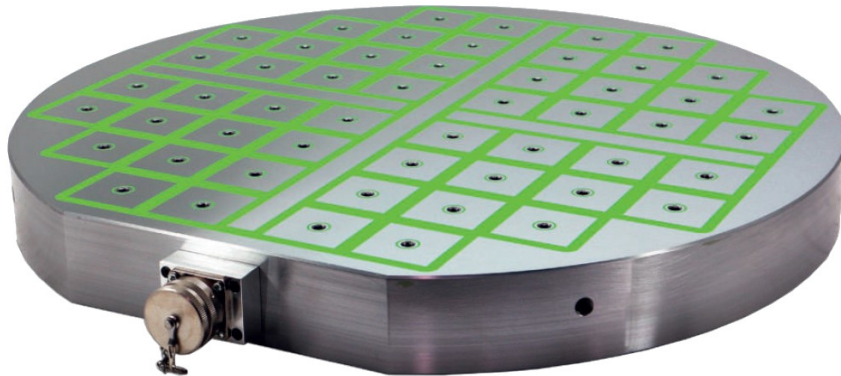


Electro-permanent magnetic chuck FX-LR

FOR MILLING OF PIECES WITH MEDIUM-LOW THICKNESS



- ✓ Polar pitch: 64 mm and 82 mm
- ✓ Poles: 50x50 mm and 70x70 mm.
- ✓ Total Height 66 mm
- ✓ For Round Workpieces

FXL-R round magnetic clamping plates in square pole technology are especially suitable for use on the lathe and on rotary tables of machining centres. The frame construction of the FXL plate can be fitted with centring elements both at the front on the clamping side and at the rear.

The connection to the FXL-C control unit can be plugged in externally or also via a rear sliding contact with shaft leadthrough.

MODEL	DIMENSIONS (mm)		POLES	Weight kg	Control Unit
	Diam	H			
FXL-R 420/50	420	66	24	65	FXL-C
FXL-R 600/50	600	66	52	135	FXL-C
FXL-R 750/50	750	66	68	210	FXL-C
FXL-R 900/50	900	66	108	300	FXL-C
FXL-R 1000/70	1000	66	72	390	FXL-C
FXL-R 1250/70	1250	66	120	550	FXL-C

The control unit is not included in the product

The back can be drilled 25mm deep at all points. FXL-R are often customised to fit the machine rotary table exactly and, if required, are also equipped with zero point clamping systems.