

Permanent magnetic blocks BL1 and BL2

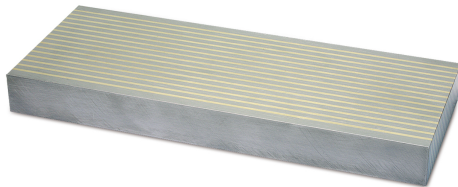
LAMELLAR BLOCK

The lamellar blocks are used together with the magnetic planes to anchor irregular geometric shapes or materials with different magnetic properties.

The blocks can simply be placed on the magnetic pegs or fastened with mechanical systems

- ✓ Polar platen for jigs and fixtures used to save the surface of the magnetic platen

BL1L



BL1Q



MODEL	DIMENSIONS (mm)		
	A	B	H
BL1L 4045	400	45	25
BL1L 0707	75	75	25
BL1L 1007	100	75	25
BL1L 2007	250	75	25
BL1L 3007	300	75	25
BL1L 6007	600	75	25
BL1L 6507	650	75	25
BL1L 1010	100	100	25
BL1L 2010	200	100	25
OTHER MODELS ON REQUEST			

MODEL	DIMENSIONS (mm)		
	A	B	H
BL1Q 1007	100	75	25
BL1Q 2007	200	75	25
BL1Q 2010	200	100	25
BL1Q 2510	250	100	25
BL1Q 3010	300	100	25
BL1Q 4010	400	100	25
BL1Q 2515	250	150	25
BL1Q 3015	300	100	25
BL1Q 4015	400	100	25
OTHER MODELS ON REQUEST			

BL2



MODEL	DIMENSIONS (mm)		
	A	B	H
BL2 101	60	80	30
BL2 102	80	100	40
BL2 103	100	140	50