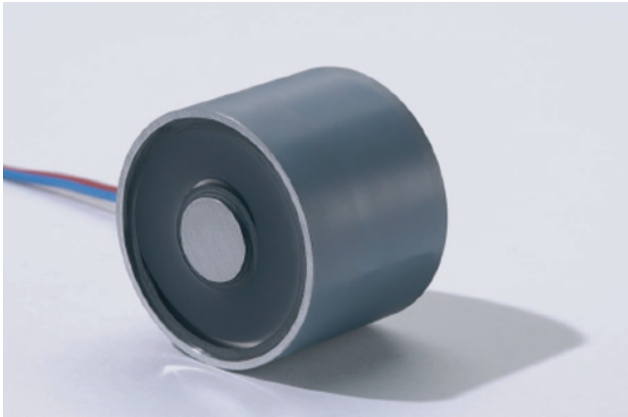


# Circular Permanent Electromagnets

## ELECTROMAGNET WITH PERMANENT MAGNETS



- ✓ Dimensions from 12 to 150 mm
- ✓ Holding force from 8 to 3.500 N
- ✓ Active holding force even with power failure
- ✓ No residual magnetic field
- ✓ Standard nominal voltage: 24 V DC

This series of circular electromagnets are used in places where greater safety is required, as even in the event of a power failure the magnet is always active.

The coil is resin coated (protection class IP65 or IP54). The magnet housing and the outer surface are galvanized. Anchoring can be done via the central threaded hole on the back of the housing.

MODEL	DIMENSIONS (mm)		M x deep (mm)	Holding Force (N)	Power (W)	Weight (kg)
	D	H				
24 V DC; 25% ED						
01 32002B00	20	22	4x4,5	40	3,6	0.04
01 32003B00	35	28	4x5	160	4,6	0.15
01 32005B00	55	36	5x5	420	8,9	0.5
01 32007B00	70	45	8x5	720	13,3	0.9
01 32009B00	90	48	8x7,5	1200	21,7	1,5
01 32010B00	105	56	10x10	1600	28	2,7
01 32015B00	150	63	16x16	3500	40,5	6,4
24 V DC; 100% ED						
01 32003A1	32,2	40	4x4,7	260	6,2	0,02
24V DC; 100% ED / 15% ED						
PEM1213A	12	13	4x10	8	1	0,01
PEM1515A	15	15	4x10	30	1,5	0,02
PEM2020A	20	20	5x12	60	2	0,04
PEM2525A 15%ED	25	25	6x15	140	9,6	0,08
OTHER MODELS ON REQUEST						